



2024 IMPACT REPORT



Epic's 2024 Content

#TogetherWeAreEPIC

04

About Us

Our Vision	4 - 5
Foreword	6 - 9
Our 2023	10 - 11

12

Community Development Initiatives

Digital Learning Hubs	14 - 15
Alternative Feed Farms & Composting	16 - 17
Kampung Orang Asli Gurney	18 - 23

24

Epic Homes

Two Villages Completed	26 - 27
Key Fundraisers	28 - 29
Epic Homes Sponsors	30 - 31
The Epic BuildHer Campaign	32 - 33
Home Builds by Schools	34 - 35
Orang Asli Local Capacity Building	36 - 37
Volunteer Growth: Epic Corp	38 - 41
Core Team Training & The Big Epic Camp	42 - 43
Basic Builder Workshop	44 - 45

46

Village Mapping & The Pathfinder Movement

Who are the Pathfinders?	48 - 49
Testimonials	50 - 51

52

Highlighted Projects

The "Epic Camp" with HELP International School	54 - 55
The Good Builder Workshop with Swiss Re	56
CAREton Perbadanan Putrajaya Mini Carnival	57

58

Sedunia

60

Epic Communities

Parc	62 - 65
------	---------

66

Closing

A Tribute to Uncle Ben	66 - 67
Our Manifesto	68 - 69
Thank You	70

About Us

Below showcases our companies and brands. Collectively, we refer to ourselves as EPIC.



Our Vision

What we strive for

Our Vision is to create a world full of Extraordinary People Impacting Communities.



EPIC Collective

EPIC is an award-winning social enterprise that inspires, mobilises and empowers individuals to live extraordinary lives dedicated to creating positive impact around them. Epic has proudly been involved in development projects around the region, while also establishing ourselves as consultants to organisations from multiple sectors, including the Malaysian government and the Obama Foundation.



EPIC Society

Our tax-exempted not-for-profit body that strives to build resilience and enable social mobility within marginalised communities.



EPIC Homes

Our flagship initiative that strives to bridge the gap between the urban and rural divide through the activity of building homes for underprivileged Malaysian communities.



EPIC Communities

Our placemaking, design and build company that strives to empower communities to participate in developing thriving and sustainable physical environments.



Sedunia

Online platform that enables extraordinary people to impact communities and track their impact



Pathfinder Movement

Our movement to enable the sharing of community stories in a dignified and accurate manner to invite collaborators to partner alongside these communities to enable positive impact.

Tax Exemption Status

We are officially a tax-exempted body by the Malaysia Inland Revenue Board under subsection 44(6) Income Tax Act 1967. Donations made to EPIC Society are eligible for tax exemption receipts (terms & conditions apply). For further information on sponsorship & donations, go to page xx



Foreword

John-Son Oei

Founder and Chief EPIC Officer

Extraordinary People Impacting Communities—this has been our mission for the past 15 years. This year, we are more convinced than ever that meaningful and lasting change happens when ordinary people choose to do extraordinary things.

This report highlights how that belief is brought to life, creating ripples of impact across rural and urban communities, and touching lives from all walks of life. From empowering Orang Asli communities to transforming neglected spaces into vibrant hubs of community activity, we've seen how uniting like-minded individuals can yield results beyond our imagination. What's most inspiring is how contagious the EPIC spirit is—interacting with these incredible individuals compels others to join in and create extraordinary impact. Whether it's building homes, crafting furniture, mapping communities, recycling, or painting walls, this ethos has always been at the heart of what we do.

We acknowledge that tracking and quantifying such efforts is a challenge. That's why this year, we're introducing **impact indicators**. These tools will help us measure how our short-term efforts align with our long-term goals. Designed to be user-friendly, these indicators will allow us to hold ourselves accountable, identify areas for improvement, and celebrate achievements. By tracking progress, we can empower communities to sustain themselves and perpetuate a virtuous cycle of positive change. I encourage you to take the time to explore these indicators as we integrate them into all aspects of our work.

While the report speaks volumes about what we've achieved together, I'd like to highlight a few key milestones from this year:

- 1. Providing 101 Families with Safe Homes:** Surpassing the ambitious target of Project 100 was no small feat. This effort not only improved lives but also empowered Orang Asli leaders to tackle housing challenges and inspire other villages with their success.
- 2. Transforming PARC into a Vibrant Community Hub:** Watching this space evolve into a center for sustainability and community engagement has been remarkable. It's fulfilling to see visitors transition from consumers to co-creators—whether through composting, building fences, or painting walls.



John-Son Oei

Founder and Chief EPIC Officer

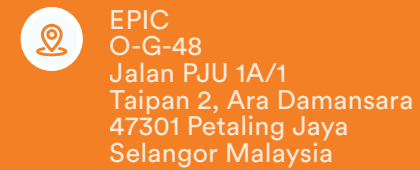
These milestones lay the groundwork for even greater achievements in 2025. For now, we want to express our gratitude to everyone who made this year's accomplishments possible:

- **To the EPIC Team:** Your relentless efforts and willingness to step out of your comfort zones have laid the foundation for everything EPIC. You are the unsung heroes, and your dedication goes far beyond the ordinary.
- **To the EPIC Community:** Thank you for believing in our mission and embracing the challenges of 2024. Your energy, time, and friendship have created a network of love and inspiration that extends beyond our projects.
- **To Our Sponsors and Partners:** Your trust, resources, and collaboration have been the fuel for our momentum. Special thanks to the Malaysian government for enabling a people-led movement and successful multi-sector collaboration, showing how much more we can achieve when we put our resources together.

Finally, we thank God Almighty, who makes all things possible. Thank you for keeping us safe and blessing the hands that contributed to this work.

Together, we are EPIC.

#TogetherWeAreEpic



John-Son Oei
#TogetherWeAreEpic

Vision & Mission

● Vision

A world full of Extraordinary People Impacting Communities

● Mission

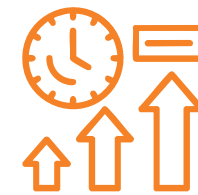
Mobilising and empowering ordinary people to make extraordinary impact in their communities



Method of Change

At the heart of EPIC, we empower ordinary people to create extraordinary impact in their communities. The impact of an EPIC Home goes beyond each new homeowner's family. When a family experiences being on the receiving end of compassion and service from others, this has a powerful ripple effect - inspiring them to create long-term change in the family, community, and beyond.

We do this through our method of change, where we work with individuals in different stages of development.



● THE THRIVING

We first work with individuals who are thriving. These are people who have their basic needs fulfilled (e.g. three meals a day, education, transportation, and shelter). We provide them with opportunities to grow their personal capacity and create meaningful impact to find their purpose in uplifting others.



● THE SURVIVING

We connect thriving individuals to underserved individuals or communities, starting with the surviving or hardcore poor. We believe that they too have the potential to be EPIC, but are hindered by their circumstances. We support them by providing basic needs (e.g. homes, water, food, healthcare, etc) to move out of survival mode to the striving stage, where they can begin to dream and fight for a better future.



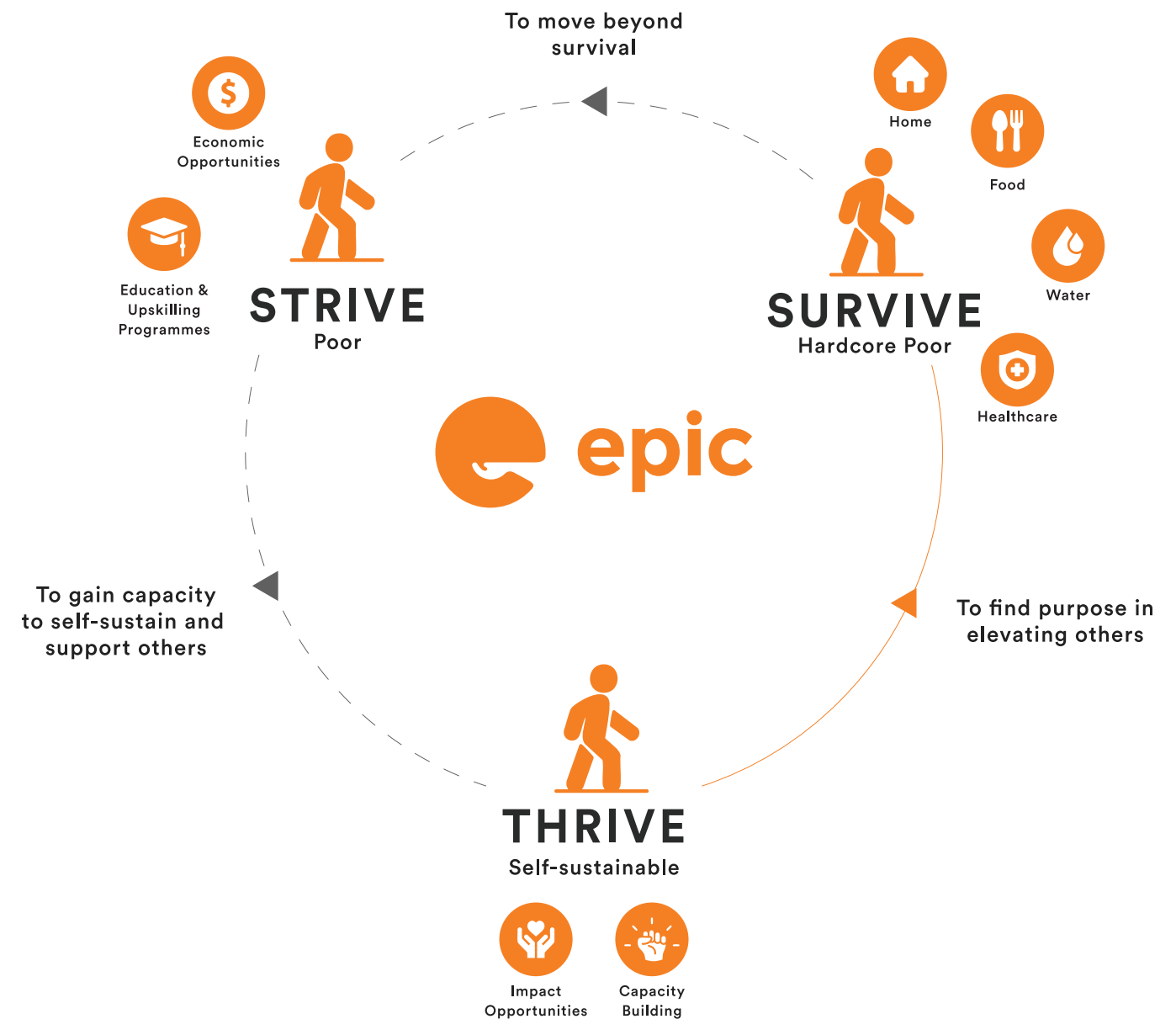
• THE STRIVING

In this stage, although still poor, they have their basic needs met. We facilitate access to opportunities and resources required to break out of the cycle of poverty. This can be upskilling and earning additional income, helping them gain the capacity to independently sustain their families and support others around them on their road to becoming a thriving individual.



• THE RIPPLE EFFECT

To us, success is achieved when the individuals we have supported gain the capacity and self-belief to pay it forward and support others (simply put – being EPIC). At each level, we ensure that these individuals have the opportunity to participate in their community, become activated to serve and create impact. However, the more an individual thrives, the greater their potential impact. From there, the cycle continues – Extraordinary People Impacting Communities.



Our Impact Indicators

At EPIC, our vision is to see a world full of **Extraordinary People Impacting Communities**. Our mission is to mobilise and empower ordinary people from all walks of life to make an extraordinary impact in their communities.

We hear too much about our collective power for destruction but not enough about how potential to harness that energy for good.

Over the past 14 years, we've made it our work to show how that is possible and seen thousands of people - from both urban and rural communities - coming together to make extraordinary change. While we have quantified our success through the number of homes built and families supported, we aspire to capture the full breadth and nuance of our impact. This year, we are excited to introduce **EPIC's Impact Indicators**, which track progress across all of our programmes.

EPIC's Impact Indicators



1. EPICness

This indicator measures the desire and action to influence and impact surrounding individuals. It is our method of measuring the level of agency or empowerment that a community demonstrates in addressing its own challenges.

EPICness underpins our theory and method of change. We believe that individuals and communities who have agency and the capacity to collaborate are:

- Empowered to take charge of their own situation
- Able to advocate for their future
- Able to work together to achieve their aspirations

It moves a community from a state of learned helplessness to empowerment. They are able to make decisions and work towards a more dignified and sustainable future, reducing their reliance on external aid. It shows the readiness of the community to advocate and work towards a better future for themselves.



2. Strength of Support Networks

In order to transform dreams into reality, an activated EPIC Community needs resources. This is where support networks come into play.

Support networks help to address inequalities within a community - allowing for skills, knowledge, expertise, and resources to flow between organisations, individuals, and communities. It opens up opportunities they may not have been able to access on their own, opening up the community to a library of shared resources that can be exchanged (or leveraged) for social capital and cultivating a network of partners with genuine interest in social development that is directed by the community themselves.



3. Quality of Life

This indicator provides a quantifiable measure of the physical and mental impact we make in alleviating poverty (moving individuals from surviving, to striving, and finally to thriving). It shows us how lives are improved when empowered individuals and communities work together to achieve their dreams and have access to resources. It is a measure of one's overall quality of life, including:

- Their current life satisfaction
- Their sense of belonging
- Their current state across multiple dimensions of life

Through this, we are able to pinpoint any interventions required, measure the specific outputs of these interventions, as well as the overall effect these interventions make on their wellbeing and sense of connection with the wider community. We believe that when individuals are thriving and have greater part of quality of life, they have more potential to be a force for change.

Our 2024



Completed (and Surpassed!) the Goal of Project 100

In 2024, we successfully provided 101 Orang Asli families across six villages in Peninsular Malaysia with safe housing! This marks the most homes built annually - in the entire history of EPIC Homes. Notably, it is also more than a three-fold increase from our previous record number of homes built in a year.

Built the 2nd Prototype of the EPIC Bamboo Home

In partnership with Design Better Bamboo Buildings, SEAD Build, and JTK Consulting, we built our second prototype of the EPIC Bamboo Home at PARC in April. Building this enabled us to test the feasibility of a rapid-building system for bamboo by a minimally-skilled volunteer team. The structure of the EPIC Bamboo Home is now used as a model for various testing. We are also honoured to be part of the 2024 cohort of Citi Foundation's Global Innovation Challenge grantees to further develop and prototype the EPIC Bamboo Home design.

Welcoming An Extraordinary Cohort of New & Returning Volunteer Builders

In aiming to build more homes annually than ever before, the need for more volunteer builders was at an all-time high. We were wholeheartedly grateful to welcome a record number of 664 new volunteers in 2024! In fact, the majority (66%) of volunteer builders this year were first-timers. It was encouraging to see such a spurt in our volunteer growth. Even more impressively - nearly 30% of these first-time builders went on to build multiple EPIC Homes.

13 Orang Asli Villages Mapped

Through the Pathfinder movement, we have completed mapping 13 villages in 4 states in Peninsular Malaysia. These villages are interested in making a difference for themselves.



Activating Six Orang Asli Communities

The EPIC Homes programme intentionally encourages participating communities to be proactive and act with agency in shaping the future they wish to see for themselves (and their community!) in overcoming the housing challenges they face. We refer to this as 'activating' a community. This year, we saw many Orang Asli residents step out of their comfort zone to play an active role - leading and coordinating their community's efforts in building EPIC Homes for their neighbours. Across multiple villages, we were amazed to witness several extraordinary individuals going even further by visiting other villages to help teach and train them in building EPIC Homes too.

Connecting Urban Communities: Year 2 of PARC

From festivals, bazaars, recycling days, and nature learning sessions, to creative art workshops (and even several weddings), PARC played host to a record number of internal and external community events and programmes this year. We were delighted to see the community come together to shape PARC into a space they could call their own through communal sustainability-themed activities like painting a mural at the Amphitheatre, to building outdoor furniture from upcycled materials so that more people could relax by the lakeside. Here's to building an even closer-knit community in 2025!

Largest Upcycled Classroom Furniture Building Activity

In collaboration with Swiss Re for their Asia Days programme, 100 units of tables and chairs made from upcycled material were built and provided to 2 schools in need - in just 2 hours. Participants from Swiss Re flew in from multiple countries around the region and worked alongside students from the beneficiary schools. This hands-on activity fostered teamwork among Swiss Re's senior managers and made a positive impact on the educational environment for these students.

Impact Scoreboard



35.5%

Cumulative Community EPICness



RM6.07mil

Worth of resources shared due to strength of support networks



101

families had an average of 10% increase in quality of life

Our Development Process

EPIC uses an intentional development process that activates and empowers communities, ensuring they play a key role in their own development.

Getting Started

The process typically begins with a referral or enquiry from either community members, other NGOs, social enterprises or local governments. From there, we get to know the community by meeting local leaders and interested community members. We introduce them to our process and learn about their aspirations for the future, emphasising that EPIC is committed to a long-term partnership. This lays the foundation for establishing trust.

If community leaders buy-in to the process and express interest in continuing with us, we move into the Asset Mapping process. Here, we have community discussions and get to know the communities on a community and household level. Information gathered is analysed and compiled into a village profile and video. For now, this information is channeled into the EPIC Homes movement. In the future, we hope to create a database that can be shared with strategic partners capable of providing the community with necessary and relevant support.

Village Activation & Empowerment: Two Levels

We then activate the village through the EPIC Challenge: Level 1. In this stage, villagers undertake capacity-building initiatives that simultaneously:

- Empower community collaboration
- Intentionally grow existing support networks

Through this, our aim is for communities to be empowered and choose to take on EPIC Challenge: Level 2, where they can either:

- Work on their own initiatives to improve their immediate communities
- Venture further out to influence and empower other communities

Community participation, the sharing of opinions, and proactive decision-making is encouraged throughout the process. These intentional steps within our development process align with our mission to empower people to be extraordinary.



20

How We Impact Communities

Rural Communities

Building the foundation for future success through EPIC Homes

Project 100



A safe and secure home is a basic necessity. Yet, over 12,000 Orang Asli families are in need of safe housing, and this number continues to grow. As an intentional effort to address this, in 2024 we started Project 100 - a mission to provide safe housing for 100 Orang Asli families on an annual basis.

We partnered with the MADANI Government to introduce the 1-to-1 Home Sponsorship Matching Initiative - whereby every home funded (by the public or through corporate sponsorships/team building) would be matched by the government.

EPIC Homes Sponsors

In 2024, EPIC Homes successfully secured sponsorships for a total of 120 homes – a significant milestone in our mission to provide safe homes for Orang Asli families in need. Out of these, 101 homes were completed this year, transforming the lives of families across Malaysia.

Thanks to the 1-to-1 Home Sponsorship Matching Initiative by the Malaysian Government, we are thrilled to announce that an additional 20 homes have been rolled over to 2025, ensuring continued momentum and impact in the coming year.



Love Force
1 EPIC Home



Tenby International School
1 EPIC Home



JELYSABEE
1 EPIC Home



Chin Hin Group
1 EPIC Home



MADANI
100 EPIC Homes



Zurich Malaysia
2 EPIC Homes



Mubadala Energy
1 EPIC Home



HSBC Malaysia
1 EPIC Home



Singapore Institute of
Landscape Architects
1 EPIC Home



Singapore Institute of
Architects
1 EPIC Home



Hartalega
2 EPIC Homes



L'Occitane Groupé
1 EPIC Home



UTAR of Management &
Technology & EPIC Run
1 EPIC Home



GE Aerospace
1 EPIC Home



Yayasan Asiaworks
1 EPIC Home



PPG IT
1 EPIC Home



Kenneth Tan's
Fundraiser
1 EPIC Home

Partial Sponsors: Mont Kiara International School, German Speaking Society KL, Cyclist Wardrobe, MASTERCARD

RURAL COMMUNITIES

Other Sponsors

Sponsorship of a 4x4 vehicle

We extend our heartfelt gratitude to Bandar Kepala Batas Sdn Bhd for their generous sponsorship of a 4x4 Nissan Navara, a vital addition to the EPIC Homes fleet. This vehicle enhances our capacity to build three (3) homes at a time, significantly increasing our efficiency and reach.



Villages Completed

This year, we have completed EPIC Homes builds in 6 villages in the district of Hulu Selangor

VILLAGE	NO. OF FAMILIES IMPACTED	NO. OF VILLAGERS WHO PARTICIPATED	NO. OF EPIC INDIVIDUALS WHO CONTRIBUTED	EPICNESS OF THE COMMUNITY	INCREASE IN QUALITY OF LIFE
KOA Hulu Kluang	30	50	Urban - 456 Orang Asli - 55	37%	6.96%
KOA Sungai Buloh	13	21	Urban - 107 Orang Asli - 55	36.8%	11.58%
KOA Bukit Manchong	27	42	Urban - 615 Orang Asli - 35	35.6%	5.61%
KOA Tun Abdul Razak	15	14	Urban - 118 Orang Asli - 49	34.3%	12.27%
KOA Gerachi Jaya	12	14	Urban - 137 Orang Asli - 27	34.6%	2.71%
KOA Kolam Air	5	14	Urban - 160 Orang Asli - 14	34.8%	9.34%

EPIC Bamboo Home



The rising cost of construction materials and the industry's shift towards a greener future has prompted the re-evaluation of our current EPIC Homes design to incorporate the use of bamboo for a more sustainable, local solution.

A traditional building material used by the Orang Asli, bamboo is typically abundant in many of their villages. However, many Orang Asli lack access to opportunities to update their knowledge on the latest bamboo curing, preservation, and technology. As such, they are unable to fully reap the benefits of bamboo as a durable, long-lasting material - comparable to timber or steel. Incorporating bamboo into an EPIC Home's construction leverages the Orang Asli's traditional knowledge and brings it into the 21st century, enabling them to upskill and expand their knowledge for modern applications.

Using bamboo in this way will spur the local economy of Orang Asli villages. Large clumps of bamboo forest can be found within Orang Asli customary land. The Orang Asli will gain economic opportunities in terms of harvesting and treating bamboo to be used as a construction material. This design will also allow homes to be built near coastal areas, where the salt content in the air would normally cause traditional steel homes to rust.

This year, we built our second prototype in May at PARC, Taman Subang Ria. Due to its natural properties and shape, skilled labour is typically required to expertly handle and build with bamboo. Building this prototype enabled us to test the feasibility of a rapid-building system for bamboo by a minimally-skilled volunteer team. The structure of the EPIC Bamboo Home is now used as a model for various testing of ownership and commitment.



#TogetherWeAreEPIC

31

This innovation project is a partnership between Design Better Bamboo Buildings, SEAD Build, JTK Consulting, and EPIC Homes.

We are also honoured to be part of the 2024 cohort of Citi Foundation's Global Innovation Challenge grantees to further develop and prototype the EPIC Bamboo Home design.

Partners:



Venue Sponsors:



Building a Foundation for Future Success Through PARC

Located in Taman Subang Ria, Subang Jaya's largest privately-owned urban park, PARC spans 7.5 acres as a community hub developed by Sime Darby Property in collaboration with EPIC Communities. Also known as "Project A Reka Cipta," PARC is a sustainability-driven space designed to inspire a future-forward way of living — one that harmonises nature and purposeful action by championing sustainability and community living. Rooted in and shaped by extensive community feedback since June 2021, PARC's vision reflects our belief that real change begins when individuals unite to contribute toward a shared goal.



In urban design, PARC is celebrated as a “third space” - a social environment distinct from home (first space) and work/school (second space) - where people come together to connect, engage, and build a sense of community. As a space freely open to and accessible by the public, PARC is designed to benefit all segments of society, who are invited to experience and contribute to this collective journey.

To attract an urban audience, PARC integrates local food and beverage businesses, offering diverse dining options in a relaxing atmosphere with scenic lake views surrounded by greenery. The thoughtfully-designed PARC Hub, a vibrant community building, prioritises flexibility, enabling a wide range of activities and events while creating a safe, welcoming space for relaxation, play, and interaction. Initially, most visitors experience PARC passively, drawn by its inviting spaces that are a revitalising haven from the urban bustle of city life. Over time, through intentional design and engaging programming, they evolve into active participants that contribute to the community and enrich their own connections.



EPIC's Method of Change is integrated into PARC's philosophy. By addressing basic needs, PARC empowers individuals to engage in programs that foster collaboration, skill-sharing, and volunteering, catalysing long-term community impact. The first phase of PARC, centred around the PARC Hub, includes multi-functional event spaces, makerspaces, and a community garden - which all provide opportunities for individuals to create, learn, and connect.



Through these initiatives, PARC fosters a sense of shared ownership, encouraging the community to shape its identity, spaces, and programmes.

By responding to evolving needs and aspirations, PARC ensures that the park grows alongside its community, reflecting a shared commitment to sustainability, inclusivity, and collective action. PARC's community programmes focus on supporting those who may be in survival mode, working to meet their basic needs. By connecting thriving individuals to serve others, PARC creates avenues for social support and community care. Initiatives like the Mental Health Matters program, organised by the Subang community, offer crucial support for people in need, promoting a culture of shared resources. This creates a network of mutual aid, where community members contribute their time, skills, and resources to uplift each other. These programmes are vital for building resilience and fostering a culture of compassion, where the act of giving not only helps others but also enhances the well-being of the givers themselves.

PARC was designed to play an active role in contributing towards the ESG goals of Sime Darby Property in developing townships and spaces with urban biodiversity embedded in their core. As a community-focused space, PARC represents an innovative step for a property developer to testbed ESG efforts in ways that are approachable to the everyday person. As sustainable development represents a core component of developing PARC, the 'triple bottom line' of environmental sustainability, economic sustainability, and social sustainability represents a foundation for PARC.

To ensure that PARC remains true to its vision, the triple bottom line is converted to measurable data that feeds into Sime Darby Property Bhd's corporate sustainability agenda and efforts. PARC's recent recognition in property developer awards (such as in The Edge and The Star) further sets a new benchmark for the real estate industry in showcasing how the efforts of placemaking (engaging your stakeholders, co-creating with the community and using feedback to inform design outcomes) works in creating equitable spaces.

In addition to this, the "soft" elements of PARC's programming encourages individuals to gain new skills, expand their knowledge, and work towards a more sustainable future for all. Environmental sustainability is a key pillar of PARC, where workshops on upcycling, recycling, and sustainable living provide opportunities for community members of all ages to engage with nature and adopt eco-friendly practices.

Through programmes with our partners like Grow Subang's gardening & composting initiative and Clean Recycling Day with Kawan Guni, PARC not only reduces waste but also creates opportunities for deepening our respect and appreciation for the world around us. PARC's efforts, such as the installation of solar panels and rainwater harvesting systems, further demonstrate our commitment to sustainability and responsible environmental stewardship. As individuals journey deeper into these programmes, they take ownership of their impact, creating a ripple effect that extends beyond the park and into the broader community, empowering individuals to support others on their journey from surviving to thriving.



Key Highlights to Date



>322

Events & programmes
hosted



>230,000

Visitors in total & counting



1.81

Tonnes of waste diverted from landfills through
collection days (that's as heavy as a rhinoceros!)



>100,000

Single-use plastic water bottles (600ml) discouraged
through our free water refill station



>1,000

Volunteers contributing back to PARC and towards
other communities in need

Notable Events



Community Social Dancing
(Lindy Hop) with KL Swing



Clean Recycling Day with
Kawan Guni



Biodiversity Classes for Kids with KNOTs

Awards



Special Mention (Below 10 Years Category)
at The Edge Malaysia Best Managed & Sustainable Property
Awards 2024



The Placemaker Award
at Star Property Awards 2024



2024 • PAM Award – Commendation • Adaptive Re-use

42

Celebrating the EPIC Community

CELEBRATING THE EPIC COMMUNITY

Volunteer Growth

Strength in Service: EPIC's Extraordinary Volunteers

Without our volunteers, we would not be able to accomplish what we do at EPIC Homes or achieve our mission of providing safe homes for 100 Orang Asli families every year - Project 100!

To achieve this we have four training tracks (or 'Pathways') that allow our volunteers to join, rank up, and contribute to the EPIC Homes mission.



1. The Builder Pathway

EPIC Homes are built by volunteer builders who are integral to making sure a home is built safely and on time.

To do this, every volunteer builder undergoes the 'Builder Pathway', which is a structured craftsmanship training track. First-time builders start out by gaining knowledge and skills in technical building through our Basic Builder workshop. From there (and after building a few homes), they have the option to learn more advanced technical building skills, as well as get trained in team management and leadership, through our Advanced Builder Course. The training allows volunteers to graduate from Builders, to Specialist Builders, and finally Master Builders as they fine-tune and develop their leadership and competency skills.



2. The Experience Coordinator Pathway

Whenever volunteers are on a mission, we must ensure that they are in tip-top shape to perform - and our Experience Coordinators are key to making this happen. Experience Coordinators not only make sure that everyone on the mission is well-fed, accommodated, and able to be at the mission. but also that the whole experience is fun, engaging, safe, and inclusive. The Experience Coordinator Pathway is a structured track that any volunteer builder can undertake to become a fully-fledged Experience Coordinator.



3. The Training Pathway



Before becoming a Builder, Experience Coordinator, or Pathfinder, our volunteers need to be trained in the skills necessary to fulfil each role. To do so, they attend workshops led by our Facilitators and Trainers. These are normally the first people that our volunteers interact with and are crucial in providing the foundation of skills, technical knowledge, and a pleasant first impression of EPIC Homes!

4. The Pathfinder Pathway



Before any partnerships can be established, we have to first meet and engage with the community.

Pathfinders act as the first point of contact to engage with marginalised communities. They map communities to get to know the community and their aspirations. This is to enable the sharing of community stories in a dignified and accurate manner to invite collaborators to partner alongside these communities to enable positive impact.

The 2024 EPIC Community in Numbers

 **184**
Missions

- 101 Families provided with safe shelter
- 13 Villages Mapped
- 70 Workshops (includes Basic Builder, Advanced Builder Course, Experience Coordinator Course, First Aid Course, Pathfinder, and Lead Pathfinder Workshops)

 **1,448**
Builders built EPIC Homes*

- 510 (43%) were returning builders from previous years
- 664 (57%) were first-time builders

*as of 7 Nov 2024

 Out of the 664 first-time builders this year
180
built more than 1 home

- ★ 63 levelled up to become Apprentices
- ★ 23 levelled up to become Specialists
- ★ 1 levelled up to become a Master Builder

 **New Experience Coordinators**

- 4 Experience Coordinators
- 19 Experience Coordinator Apprentices

 **New Facilitators**

- 23 Facilitators
- 17 Facilitator Apprentices

 **New Pathfinders**

- 64 Pathfinders
- 6 Lead Pathfinders

AN EPIC EXPERIENCE:

Words from Our Volunteers

Jeremy Sim | Specialist Builder



Based in Singapore, Jeremy had heard about EPIC Homes from a friend. He decided to join a Basic Builder Workshop and build an EPIC Home whilst on his travels in Malaysia. He enjoyed the experience and the community so much that he kept coming back for more, commuting back and forth from Singapore to Malaysia to build more EPIC Homes. Sometimes, he would even build multiple EPIC Homes in a row over several weekends! Jeremy chose to level up in the Builder Pathway and became a Specialist.

“I’ve always wanted to play a bigger role in humanitarian and sustainability efforts. When I learned of EPIC Homes from a friend in Malaysia, I was very drawn to and inspired by their efforts of working alongside the Orang Asli community to provide homes and improve their livelihoods.

It was an extremely humbling experience for me as a Singaporean - lucky to be living in a very clean, sheltered and sanitary environment - to have seen how seemingly simple things (like coming together as a team to hammer wooden boards and putting in a few screws over 3 days) can make such a drastic and transformative difference to the families’ and community’s lives upon them receiving the house.

My skills and life circumstances allow me to contribute and play a role in the EPIC Community, and hence I continue to volunteer my time and commitment to helping the community further the cause.”

- Jeremy Sim

Joanne Thong | Experience Coordinator



Joanne started building her first EPIC Home in April this year with friends. She loved the mission experience and was keen to contribute further. As such, she decided to level up and become an Experience Coordinator. With her kind-hearted nature that instantly makes people feel at ease, Joanne found herself a perfect fit for the role. Her approachable demeanor encourages open communication, creating a safe and welcoming environment for everyone on the build.

“I first joined EPIC Homes as a builder in 2022 and returned two years later through the Project 100 initiative. During my second experience, I discovered a deep passion for connecting with fellow builders and like-minded individuals. This led me to consider an apprenticeship as an Experience Coordinator. My time at the Experience Coordinator Course was transformative, offering numerous insights into leadership and personal growth. I realized that EPIC Homes provides an environment where I can be my authentic self, surrounded by a culture of encouragement and selflessness.

As I took on additional builds, I found a true passion for working with people and shaping meaningful experiences. I became deeply invested in fostering strong connections between builders and the Orang Asli, and I’ve come to appreciate the power of collaboration in creating impactful and rewarding outcomes.

I look forward to taking on more builds, where I can continue to refine my skills and build confidence in leading builders, ensuring they have an unforgettable experience with EPIC Homes.”

- Joanne Thong

Ee Chin Yang | Facilitator



Ee built his first EPIC home early this year, encouraged by friends and wanting to contribute to a cause beyond himself, he relished the idea of building a home. Ee loved the experience and built again but was also looking at other ways he could challenge himself. He expressed interest in facilitating for the Basic Builder Workshop and his natural ability to teach, encourage and give confidence to new volunteers made him a perfect fit for the role.

"I joined an EPIC Homes build because I thought it was a noble initiative to build houses for Orang Asli families in need. I was also heavily influenced by a friend of mine who had previously built several EPIC Homes.

I decided to pursue the Facilitator role to overcome my fear of meeting strangers. I love how this role enables me to share knowledge by teaching & training new builders."

- Ee Chin Yang

Ra'imi Fauzi | Pathfinder, Lead Pathfinder & Builder



As a student in the field of quantity surveying, Ra'imi decided to volunteer with EPIC during her semester break to contribute to communities in need. In June, she attended her first Pathfinding Mission with EPIC to map the communities in Selangor. She continued her journey as a Pathfinder until she saw an opportunity to level up as a Lead Pathfinder (LPF). Alongside her LPF partner Sabrina, Ra'imi led her first Pathfinding missions in Kluang and Kuala Kubu Bharu (KKB), where they mapped villages to guide future builds.

In addition to that, Ra'imi participated in her first EPIC Home build this year and was amazed at how a home could come together from the ground up in just three days. She looks forward to building more EPIC Homes and continuing to make a positive impact on Orang Asli communities.

FROM ORDINARY TO EXTRAORDINARY

The Extraordinary Hand Awards

The Extraordinary Hand Awards are given to members of the EPIC Community who have served in an outstanding role in an EPIC Mission in the Builder Pathway. And this year we are also including the Experience Coordinator, Pathfinder and Trainer Pathways towards the award.

These members demonstrate dedication, and commitment to be Extraordinary. The names mentioned here only refer to those who have achieved these awards in the year 2024 itself.

The award is based on the number of missions that each member has served in as a significant role for the mission*.

 **The Iron Hand** ≥ 5 missions

 **The Bronze Hand** ≥ 10 missions

 **The Silver Hand** ≥ 20 missions

 **The Gold Hand** ≥ 30 missions

 **The Platinum Hand** ≥ 50 missions

NEW CATEGORY
 **The Diamond Hand** ≥ 75 missions

NEW CATEGORY
 **The Emerald Hand** ≥ 100 missions

*Missions that count towards the Extraordinary Hand Awards are under specific roles, specifically:

- Builds as a Specialist
- Builds as a Master Builder
- Builds as an Experience Coordinator
- Pathfinding as a Lead Pathfinder, every 2 visits counts as a mission
- Training as a BB Manager, every two BB's count as a mission
- Training as a BB Facilitator, every two BB's count as a mission

In missions served as other roles such as being a Builder, Pathfinder or Apprentice, for each pathway do not count towards your Extraordinary Hand mission.

ALL RIGHTS RESERVED © 2024

 **Iron Hands**
in 2024 ≥ 5 missions


- IQMAL HIJAZ
- ALAN TUNG
- GERON TAN
- MELANIE TAN
- RACHEL LUA
- ASHLEY YEONG
- CHUA JIA CHEN
- THAI KIM SING
- FAEZ ARIFIN
- ALIF BIN ABDUL RAHMAN
- JACLYN CHOO
- CARYN LUM
- MICKEY LEONG
- RYAN TAN
- LUI DEE-LYN
- CHONG KAR CHUN (KC)
- ROBERT GEORGE PROSPER
- JOANNE TONG
- SABRINA LIM
- MICHELLE LIEW
- NADRAH ZAABAR
- SARA LOH
- ALEXANDRA LEE

 **Bronze Hands**
in 2024 ≥ 10 missions

- JAC LAI CHOY HUA
- TIEW KAI XIANG
- TERENCE ALLEN
- TAN KAR-MUNN
- PHOENIX TAN
- KHOO SWEE CHUAN
- CHIN DID KEN
- SITI NURAFAT ISMAIL
- SATHESH RAJ
- PING ZHI CHUA
- HAIQAL TAN
- OOI CHEN LIN
- NUR IZELA
- LOVIE TEY
- ABBY FOO
- DANIEL TEOH YONG LIANG
- NICHOLAS NG

 **Silver Hands**
in 2024 ≥ 20 missions

- STEPHEN TO
- SIMONE FOO CHERN YEN
- SHAO MEI YIN
- NAGENDERAN ESWARAN
- EVELYN KHONG
- AMANDA KHOO
- LIEW KE-BO
- JASON LIEW
- STEPHANIE YAP CHUI PING

 **Gold Hands**
in 2024 ≥ 30 missions

- ANDREW YEONG
- ONG PEN KON
- HASHIDA LEE
- ALVIN CHEW WAY FOONG
- ARIF BIN AZHAM
- LATIFFAH LEH
- NICKSON TAN
- RAYMOND WONG
- JASMINE TAN JIA MIN

 **Platinum Hands**
in 2024 ≥ 50 missions

- DAMON TAN
- SHAFRIL HADI KAMAL

 **Diamond Hands**
in 2024 ≥ 75 missions

- MATT LA BROOY
- LOW CHEE HONG

Want to learn more about the pathways?
Visit this link or scan this QR code:
<https://epichome.org/volunteer/builder-pathway>



ALL RIGHTS RESERVED © 2024

Training Programmes

The Basic Builder Workshop

To learn the basic skills needed to build an EPIC Home safely, every first-time Builder is required to attend a 1-day Basic Builder (BB) workshop. In this interactive hands-on workshop, we teach them about Handtools and Fasteners, Drilling, Sawing, Hammering, and most importantly - Safety!

This year, a record number of 54 Basic Builder (BB) workshops were conducted for 664 volunteers. This marked a nearly threefold increase from our 2023 total of 19 BB workshops. Thank you to the 120 Facilitators and Managers that made this happen.



The Advanced Builder Course (ABC) and Experience Coordinator Course (ECC)

For those on the Builder Pathway, the Advanced Builder Course (ABC) equips you with the necessary skills needed to become a Specialist for EPIC Homes. On the Experience Coordinator Pathway, the Experience Coordinator Course (ECC) equips you with the skills to become an Experience Coordinator. The ABC spans 4 days and the ECC is just 1 day, they cover topics ranging from self, people and technical leadership competencies for each role. Learning takes place through hands-on engaging activities. In the ABC, participants build a 1-module EPIC Home, dive deep into handling and maintaining construction tools, and learn the finer details of the technical design aspects of an EPIC Home. In the ECC participants deep dive in to what it takes to create a meaningful experience for volunteers and the processes behind a build. In both courses, participants also explore the why, how, and what of EPIC Home's beginnings, get a better understanding on leadership concepts, and what it takes for meaningful engagement with Orang Asli communities.





In 2024, we organised 5 ABCs with a total of 61 attendees.
This is more than double 2023's total of 2 ABCs.



57

**Basic Builder
Workshops**

664 Builders



5

**Advanced Builder
Courses**

61 Advanced Builders



3

**Experience
Coordinator Courses**

9 Experience Coordinator Course
Attendees



Communities Activated

• Extraordinary Communities

The EPIC Homes programme is used intentionally in our development process to encourage Orang Asli communities to be EPIC. As part of the programme, these communities join level one of the EPIC Challenge - which is a call for them to be proactive and act with agency in solving the housing challenge in their community. We refer to this as ‘activating’ a community.

This year, we have successfully activated 6 Orang Asli communities through the EPIC Homes programme. These are some of their stories.

“A River Won’t Stop Us”

The Story of Kampung Orang Asli Sungai Buloh

The terrain of Kampung Orang Asli Sungai Buloh provided a unique challenge for build mobilisation. Many build sites were located deeper into their customary land where road access was non-existent, across rivers and on “islands”. Nevertheless, this did not stop the community! They built bridges and hand-carried every piece of material to the various build sites. The community worked together tirelessly, sometimes into the night to ensure that the material arrived at the build site. Through this experience, the community has witnessed what they are capable of achieving when they collaborate to solve a challenge.



“Paving the Way”

The Story of Kampung Orang Asli Hulu Kuang

We started 2024 by building EPIC Homes in Kampung Orang Asli Hulu Kuang and provided safe shelter for 30 families in the community. Community efforts were spearheaded by Amalina, the build coordinator for this village. They set up internal processes to ensure the community was properly mobilised for the build. For 7 months, the community worked tirelessly to complete all the homes needed in their village.

This community has set the standard for all upcoming village mobilisations.



“Ain’t No Mountain High Enough”

The Story of Kampung Jantung, Kampung Orang Asli Tun Abdul Razak

Kampung Orang Asli Tun Abdul Razak is separated into 2 hamlets: The main village in the valley, and the splinter village in the hilly area, Kampung Jantung. With tricky winding roads and various peaks and valleys, the geographical terrain proved a challenge for transporting materials - but the community was not hindered by this. Through impeccable teamwork, the villagers hand-carried all the building materials to the build site.



“Women Can Build Homes”

A Story of Women Empowerment

This year, we have seen a record number of Orang Asli women involved in the building of EPIC Homes within their village. 40% of Orang Asli Builders were women! They actively participated in building, managing tools and materials used during builds, and even mobilising community members to build.

Inspired by another extraordinary female Orang Asli Builder, Sila from KOA Gurney, they broke the age-old mindset that building is a man’s job.



• Extraordinary Local Champions

These women have not only inspired women within their local community, but also in other villages. These are some of their stories.



Amalina
Kampung Orang Asli Hulu Kuang

Amalina bravely volunteered to be the first to lead the EPIC Homes coordination effort in her community. Initially, she was shy - but after a few builds, she gained the confidence to lead footing installation as well as home builds. Aside from building, she also manages the inventory and logistics of all material delivery in her community.



Haslina
Kampung Orang Asli Hulu Kuang

Haslina is one of the most committed builders in the community, always showing up to help her friends and neighbours with their homes. After her community completed all the EPIC Homes builds in their village, she went on to teach other communities.



Marina
Kampung Orang Asli Sungai Buloh

Everyone calls Marina 'mum' (and sometimes, 'Tan Sri!'). She is a cheerful, motherly character who leads the build and repair efforts in her village. Her responsiveness and efficiency was instrumental in ensuring the completion of all EPIC Homes builds in her community.



Kak Ros
Kampung Orang Asli Gerachi Jaya

The majority of male residents work odd jobs outside of their village. With the EPIC Challenge requiring the community to work together in resolving their housing challenge, Kak Ros played a key role in encouraging the women of this village to step up and build homes. Led by Sila, the women have learned multiple components of building EPIC Homes and are now able to build more confidently.

35.3%

Total EPICness score of Orang Asli communities activated

180

Orang Asli residents activated across 6 villages

Activities Initiated by the EPIC Community

When extraordinary people come together, they have extraordinary fun too!

We love to see our community initiate activities that build closer bonds outside of missions. We were delighted to see several community-led initiatives this year.



Social Sports Club

This year a few members of the EPIC Community started the Social Sports Club! This club is the go-to group for EPIC Community members who want to partake in various sporty activities like Pickleball, Golfing, Badminton - and even Laser Tag! With regular and ad-hoc social events taking place weekly, it has been a wonderful way for members of the EPIC Community to bond outside of building homes.



64

The Ripple Effect

Bringing the Urban & Rural Divide



• Extraordinary Support for Extraordinary Efforts

Without expecting anything in return, several extraordinary Orang Asli individuals participated in the EPIC Challenge in their village without expecting anything in return.

Desa, Kampung Orang Asli Hulu Kuang

When we first met Desa, he lived in a self-built shelter constructed from temporary material. Due to his marital status (he is single), he did not meet the eligibility criteria to receive an EPIC Home. Regardless, Desa faithfully volunteered his time and effort to help build his neighbours' homes over 6 months - ultimately contributing to over 30 homes (which makes up 60% of the home builds in his village). The EPIC Community (his neighbours in the village and the urban volunteer builders who built alongside him) were deeply inspired by his selflessness and generosity. So, they suggested building him a home as well.

Fundraising efforts to provide Desa with a new home were spearheaded by one of the Master Builders, Hadi. In just 1 week, Hadi managed to raise enough funds to build Desa a 1-module house and rallied volunteers from the EPIC Community to build him a home.



Adi, Kampung Orang Asli Bukit Manchong

With no close family in the village, Adi does not have a permanent home to reside in. He depends on the generosity of others to couch surf between homes of willing villagers. Adi has also been faithfully showing up to builds in his village. Moved by compassion and gratitude, the village suggested that he receive a home as well. One of our Master Builders, Hashida, approached our corporate sponsors to seek funding to build Adi a safe home. Hashida then mobilised the EPIC Community to build Adi his new home.





Extraordinary Fundraising for Flood Relief

After a torrential downpour in early October this year, Kampung Orang Asli Sungai Buloh was hit with flash floods - affecting 30 families in the village. The EPIC Community initiated a fundraiser to purchase new pillows and blankets for these families. Within a few hours, sufficient funds were raised and the items were delivered within 24 hours from when the floods began.

#TogetherWeAreEPIC

69

Empowered to Go Beyond Their Community

Inspired by their joint effort in completing the homes in their village, six women from Kampung Orang Asli Sungai Buloh stepped out of their comfort zone in a different way. They took up the challenge to travel to EPIC's main HQ in Ara Damansara to support our office staff with the post-build supply chain and logistics efforts. Their support has been crucial in our efforts to build multiple EPIC Homes each weekend.

This example showcases the value in the support networks formed between urban and rural communities as a result of building together, and demonstrates what can be achieved when we collaborate and share resources.



RM20,000 contributed to Orang Asli communities

Support Network of Villages

As part of the EPIC Challenge, activated communities are given the opportunity to impact other communities.

Through this, we have seen communities empowered to not just support other Orang Asli communities in their EPIC Challenge but also teach and guide them in best practices to do so.

The Builder Team from Kampung Orang Asli Gurney



The team is led by Yee Kuat, one of the local champions of Kampung Orang Asli Gurney. Yee Kuat has been instrumental in teaching and setting up hubs in various Orang Asli villages, as well as mobilising logistics for tool transportation across villages. To date, Yee Kuat and his team of 6 have supported 6 villages in footing work and 3 villages in building. Yee Kuat and his team also completed reparation works of 3 homes in Kampung Orang Asli Songkok.

The Builder Team from Kampung Orang Asli Hulu Kuang



Khairul (or Khai as he is fondly known) is one of the homeowners of an EPIC Home in Kampung Orang Asli Hulu Kuang and leads this team. Originally from Kampung Orang Asli Sg Buloh, Khai saw it as an opportunity to support the community he grew up in. Khai and his team (which includes Amalina and Haslina) have led over XX builds in Kampung Orang Asli Sg Buloh. Khai also documents the builds and turns them into video keepsakes for the community.

The Builder Team from Kampung Orang Asli Bukit Manchong



Armed with their newfound knowledge in building, Minra, Zack, and their team led the build efforts in Kampung Orang Asli Tun Abdul Razak and Kampung Orang Asli Kolam Air. With their efficiency and refined building skills, some of the EPIC Homes they build can even be completed in just 2 days. Leading and teaching the local community, this team has supported both communities in providing safe shelter for 6 families.

The Builder Team from Kampung Orang Asli Sg Kelubi



Led by Ibas, this team of 6 trained the builders from Kampung Orang Asli Hulu Kuang in how to set up the EPIC Homes structure. Apart from that, the team has supported in building 5 structures in the village.

The Window Manufacturing Hub from Kampung Orang Asli Serendah



Ever wondered where all the EPIC Home windows come from? An Orang Asli team from Kampung Orang Asli Serendah has been building the windows for EPIC Homes starting this year! The team has built over 1,500 windows to date.

Connecting Urban Communities - PARC

Our project, PARC with Sime Darby Property is more than a community hub. It functions as a platform that empowers the everyday urbanite to uplift others by bringing value towards social & environmental causes.

By holding onto key strategic goals of

- Shared Ownership
- Social Support
- Environmental Sustainability

PARC embodies values into its operating procedures, curation of programmes/activities, and design of the spaces to enable connections between thriving individuals to those who are less fortunate and marginalised. This is done in three layers.

Layer 1: The Physical Space

PARC is designed to be freely open to and accessible by the public. This encourages people from all walks of life to use the space for a variety of purposes - from homeschooling kids in The Hall, catching up over a coffee in the cafe or picnicking by the lake - there is something for everyone. in building 5 structures in the village.



Layer 2: Intentionally-curated programmes and activities

We work together with programme partners and the community to curate and offer activities in PARC that build towards our goals. Activities and workshops in PARC are purposeful and act as a common denominator to build bonds between people of similar interests, passions and social causes. This enables people to direct contribute towards positive change in the lives of others, and even towards the environment.



Layer 3: Shared Economy

PARC is meant to act as a platform that connects those who are thriving in societies to those who are striving (the marginalised, the less fortunate, those who struggle). The intent of this final layer is to act as a enabler to multiply value by channeling skills, knowledge, assets (tangible and non-tangible) between individuals, further improving and empowering lives to truly become extraordinary.

As a platform, EPIC works with partners, while PARC represents a physical hub for people to connect with others - joining forces towards transforming lives by everyday acts of kindness.

For example,

The Xchange spaces within PARC consist of a flexible classroom, exhibition space, and a DIY workshop. Extensions of impactful activities include:

- Waste and recycling education and collection drives with Kawan Guni
- Building animal shelters for strays with Woof My Roof and Ignition Lab
- Building outdoor public furniture for PARC with Ignition Lab
- Mental health & wellness sessions with Humankind

PARC hosts The Good Builder Workshop by EPIC, where participants engage in practical building sessions that empower group effort to provide practical solutions to communities in need, such as building classroom furniture for school children.

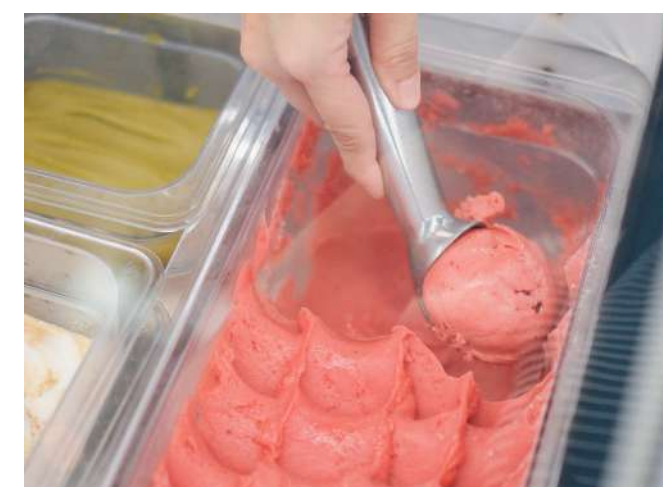


Through PARC, event organisers are made clear of PARC's goals & intentions as a space. such as You Ni Market which enabled a portion of vendor and ticket sales towards supporting social causes.

By creating a space for people from all walks of life in the urban setting with intentional activities, we enable the simple action of getting to know your neighbour and for new friendships to be built.

In 2025, this will be extended to having a "Library of Things" that people can donate to, borrow & lend, contribute time & skills and efforts towards one another.

In terms of economic development, PARC has supported more than 20 vendors through regular weekend pop-ups. This is done through favourable rates to encourage local entrepreneurs to test their mettle in our community consumer base. Being a pop-up in PARC also opens up the opportunity for them to experience high footfalls during events that are held in PARC, a position that is held only for selected businesses when it comes to curated flea markets around Klang Valley. This makes it very challenging for new businesses or local mom & pop style food operators to break into. We were also successful in bringing in two businesses from pop-up to permanent tenancy for 2025!



76

Others



The Good Builder x Swiss Re Asia Days

As a platform, EPIC works with partners, while PARC represents a physical hub for people to During Swiss Re's Asia Days event in Kuala Lumpur, EPIC was proud to facilitate a corporate social responsibility initiative where participants worked alongside students from the local schools they were contributing to. Together, they built classroom furniture from recycled timber, setting a record by assembling 100 units of upcycled furniture in a single workshop. This hands-on collaboration not only fostered teamwork among the senior leaders but also made a meaningful impact on the educational environment for the students.

We express our heartfelt thanks to Swiss Re for their commitment to sustainability and for providing this valuable opportunity for impactful engagement.



100

units of tables & chairs



200

participants



2

school beneficiaries



80

Looking Forward to 2025

Expanding Our Impact: EPIC Homes

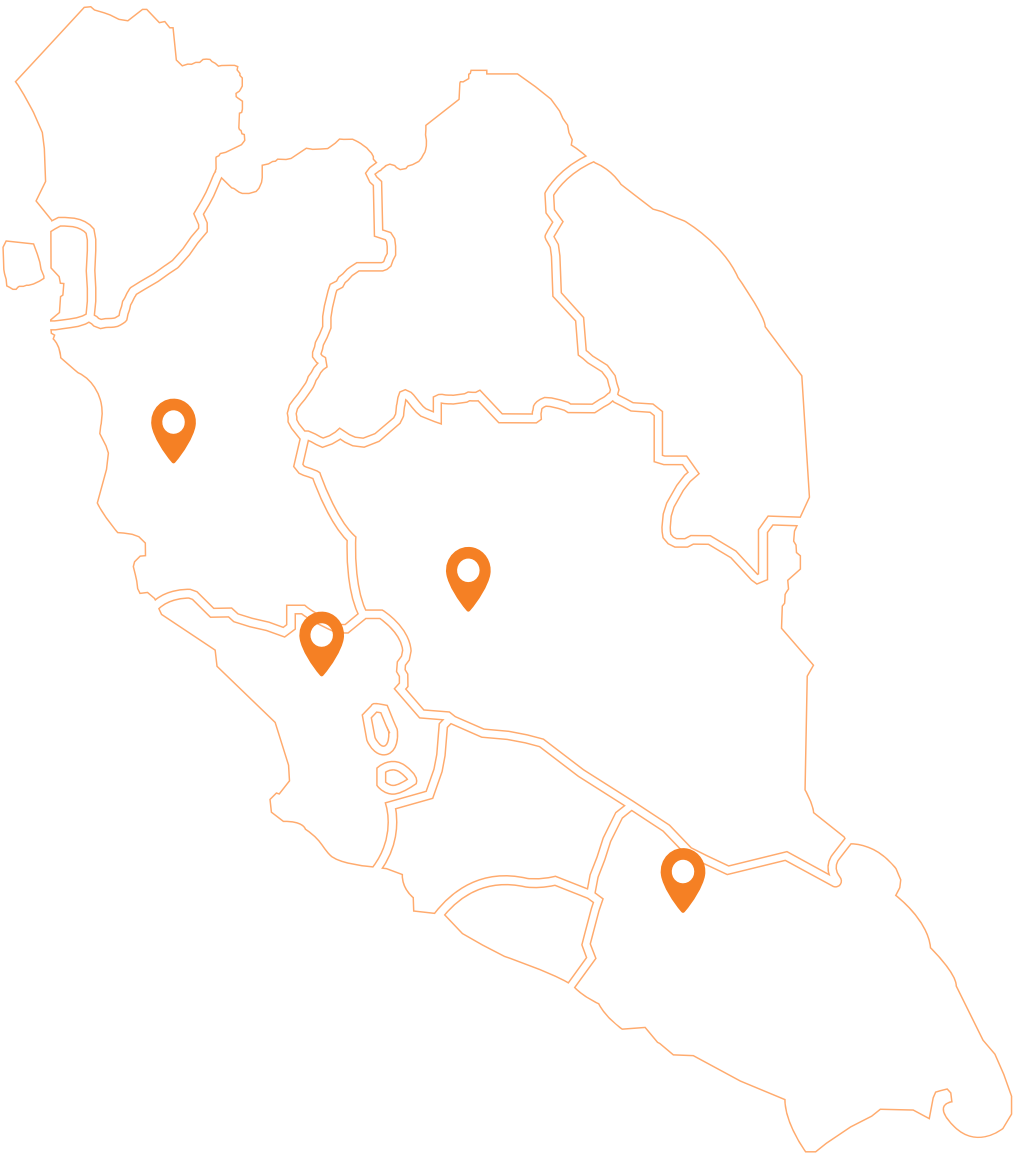
This year, we have mapped 18 Orang Asli villages that have expressed interest in developing their communit through the Pathfinder movement. These villages are:

VILLAGE	DISTRICT	STATES
Kamping Orang Asli Perak	Hulu Selangor	Selangor
Kampung Orang Asli Hulu Chemperoh	Bentong	Pahang
Kampung Orang Asli Sungai Gabong	Bentong	Pahang
Kampung Sungai Perangin	Tanjung Malim	Perak
Kampung Orang Asli Batu Berangkai	Kampar	Perak
Kampung Orang Asli Badak Berendam	Kampar	Perak
Kampung Emas	Kampar	Perak
Kampung Orang Asli Pos Raya	Simpang Pulai	Perak
Kampung Orang Asli Kerawat	Simpang Pulai	Perak
Kampung Orang Asli Pergom	Simpang Pulai	Perak
Kampung Orang Asli Pengkalan Tereh	Kluang	Johor
Kampung Orang Asli Sg Tuba	Kahang	Johor
Kampung Orang Asli Kuala Sengka	Kahang	Johor
Kampung Orang Asli Seri Kenangan	Kahang	Johor
Kampung Orang Asli Sungai Peroh	Kahang	Johor

Looking forward to potentially working with the villages soon!

We are also looking to set up bases in Perak and Johor as our northern and southern hubs! This will allow us to deliver impact more effectively and efficiently to these communities!

If you are an individual or organisation based in those areas and would like to join us as partners for these communities, please get in touch!



Deeping Our Impact: EPIC Challenge Level 2

In line with our development process, we intend to provide empowered communities with the necessary skills and resources to make an impact in their own communities.

In 2025, we will be launching EPIC Challenge Level 2! We will be launching this in all villages which have received EPIC Homes. This is intended to deepen the impact of EPIC Homes beyond just homes and to benefit the community. Interested local champions from various villages will gather to undergo a training programme which equips them to be changemakers in their communities. They will then use these skills to launch community projects.

There will also be opportunities for the EPIC Community to get involved to help bring these initiatives to life! Stay tuned as we share more about this in the year to come!



If you would like to collaborate with us to expand our impact through EPIC Homes or deepening our impact through EPIC Challenge Level 2.

Scan the QR Code to get in touch, or visit bit.ly/EPICVillageCollab

86

Awards & Prizes

Awards, Grants, Prizes

1. 2024 Global Innovation Challenge, Citi Foundation

EPIC Homes became the first Malaysian organisation to receive funding from Citi Foundation's 2024 Global Innovation Challenge, joining a global cohort of 50 community organisations. This initiative supports innovative solutions to address homelessness. Our project aims to tackle the lack of safe housing for Orang Asli communities through the innovative use of bamboo as a construction material, demonstrating our commitment to sustainable and culturally inclusive solutions.

This recognition empowers us to drive meaningful change and represent Malaysia on the global stage.

2. Bajet 2025 - Measure 52 : Orang Asli



We are honoured to be mentioned in Bajet 2025, working alongside JAKOA to continue to provide safe housing to the Orang Asli

3. Lendlease Foundation Community Grant Asia 2024



This grant from the Lendlease Foundation Community Grant Asia represents a transformative opportunity for EPIC - enabling us to equip and train Orang Asli teams in essential construction skills. This initiative will empower participants to take ownership of their housing needs, fostering self-reliance and community collaboration. By equipping them with practical skills, we aim to enhance their living conditions so that they can be empowered to break the cycle of poverty. We are thankful for this support, which will significantly impact the lives of the Orang Asli and promote sustainable development within their communities.

4. Metlife Foundation 2024 Grant



Our Metlife Foundation 2024 Grant will focus on The Orang Asli Builder Capacity Program that trains participants from 10 villages in modern construction skills, including pre-construction logistics, core building techniques, and post-construction maintenance. This empowers them to build and repair homes within their communities. By fostering self-mobilization and collaboration, the program enhances agency, ownership, and confidence (particularly among women and youth), while providing pathways to broader income opportunities in the field of construction. The initiative aims to create 10 teams of community builders to construct 100 homes, equipping participants with practical skills and a sense of empowerment to address future challenges.

5. Jabatan Belia & Sukan Negara (JBSN), Kementerian Belia dan Sukan



In collaboration with Rakan Muda, EPIC is committed to empowering Malaysian youth through the Volunteer Leaders Fund. This initiative trains young Malaysians to become leaders within the EPIC Homes movement, offering a structured pathway where they can gain hands-on experience in project planning, site management, and community engagement. As they progress, participants can "rank up," developing critical leadership skills and building confidence. The program not only contributes to the EPIC Homes mission, but also nurtures a new generation of changemakers - who are equipped to address broader societal challenges and drive positive change within their communities.



WE ARE TAX EXEMPTED!

If you require tax exemption receipt,
kindly fill in Tax Exemption Receipt Request form at
bit.ly/receipt-request

OUR MANIFESTO

I have **THE COURAGE** to go on this **epic** adventure **TO DREAM BIG & CONQUER FEARS.**

I **trust** myself with others

TO EXPLORE UNCHARTED PLACES, EMBRACE CHANGE, & RISE ABOVE CHALLENGES.

I practice **transparency** and **honesty**, **celebrate** life in all its glory, for even the **smallest win counts.**

I PURSUE GROWTH AND LEARNING

for the day I stop

GROWING

is the day I die

I choose to **love unconditionally** and reap the benefits of **giving freely, openly and kindly.**

I AM THE BEST THAT I CAN BE.

TOGETHER, WE ARE EPIC



@the.epichomes



info@epic.my



+60 3-7455 0851



www.epic.my
project100.epichome.org



EPIC
O-G-48
Jalan PJJ 1A/1
Taipan 2, Ara Damansara
47301 Petaling Jaya
Selangor Malaysia

20 24

IMPACT
REPORT

Thank You.

#TogetherWeAreEpic

